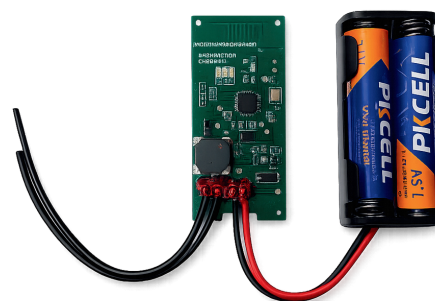


Control System**WT01**
Wireless RF Transmitter**INSTALLATION INSTRUCTIONS****THIS PACKAGE INCLUDES:****1. Wireless RF Transmitter:**

(1) Wireless RF Transmitter

**1. GENERAL DESCRIPTION**

The wireless RF transmitter is designed for door control, access control, and general low-voltage activation applications. It connects to a momentary dry-contact switch and transmits a wireless signal to the paired receiver when activated.

The transmitter is powered by two AAA alkaline batteries and features ultra-low standby current for extended battery life. An integrated LED indicator and piezo buzzer provide feedback for transmission status and battery level.

The unit includes a built-in battery level detection function. When powered on or when the switch is held for five seconds, the transmitter automatically checks the battery condition and provides audible and visual feedback.

Typical applications include:

- Push-to-open wall switches
- Automatic door activation
- Restroom control systems
- Wireless access control triggers

2. MOUNTING

The transmitter is designed to be installed behind a wall switch inside a single-gang electrical box or similar enclosure.

The circuit board and battery holder should be securely fixed inside the enclosure using adhesive pads or appropriate mounting methods. The battery holder should be positioned close to the bottom of the box to ensure proper fit and wiring clearance.

Although the circuit board includes protective coating, the transmitter must be installed in a dry indoor location and protected from moisture.

3. WIRING

Connect the transmitter leads to a normally open (N.O.) momentary dry contact switch.

After wiring:

1. Insert two AAA alkaline batteries into the battery holder, observing correct polarity.
2. Press the switch once.
3. Confirm that the LED flashes, indicating a successful RF transmission.

4. BATTERY LEVEL CHECK

The transmitter includes a built-in battery level detection function. When the unit powers on, or when the switch is held for 5 seconds, the system checks the battery voltage and provides feedback using the buzzer and LED.

Battery indication levels:

- High battery: 1 beep / 1 LED flash
- Medium battery: 2 beeps / 2 flashes
- Low battery: 3 beeps / 3 flashes
- Very low battery: 4 beeps / 4 flashes

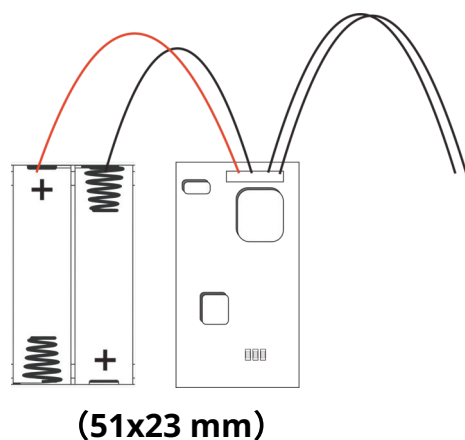
If the battery level is low, replace both batteries with new AAA alkaline cells.

5. NORMAL OPERATION

During normal use, pressing the connected wall switch will trigger a single RF transmission.

- The LED flashes once to confirm transmission.
- The transmitter then returns to sleep mode after approximately 2 seconds to conserve battery power.

Standby current in sleep mode is less than 25 μ A, ensuring long battery life.



6. TRANSMITTER PAIRING

Each channel can store up to 10 transmitters.

Pairing Procedure

1. Press and hold the channel receiver button for 5 seconds.
2. The green LED will flash rapidly, indicating pairing mode.
3. Activate the transmitter.
4. The receiver stores the transmitter and exits pairing mode.
5. The green LED will remain on to confirm successful pairing.

If no signal is received within 20 seconds, the receiver exits pairing mode automatically.

Clearing Paired Transmitters

- Press and hold the channel button for 10 seconds.
- All transmitters for that channel will be erased.
- The red LED will remain on to indicate no transmitters are stored.

7. TECHNICAL DATA

Power Supply

2 × AAA alkaline batteries

Standby Current

< 25 μ A

Battery Feedback

LED and buzzer indication

Operation

Single RF transmission per button press

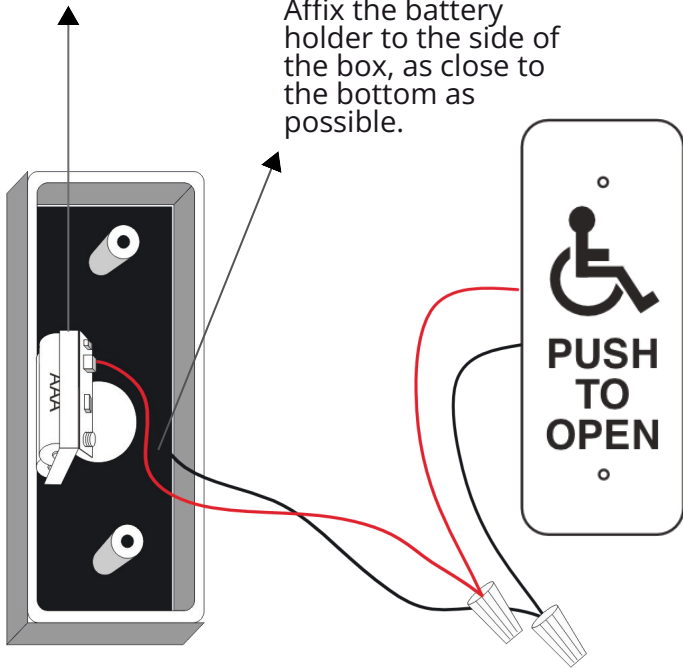
8. SAFETY NOTES

- Install in a dry indoor environment.
- Use only AAA alkaline batteries.
- Replace both batteries at the same time.
- Do not expose the transmitter to water or excessive heat.

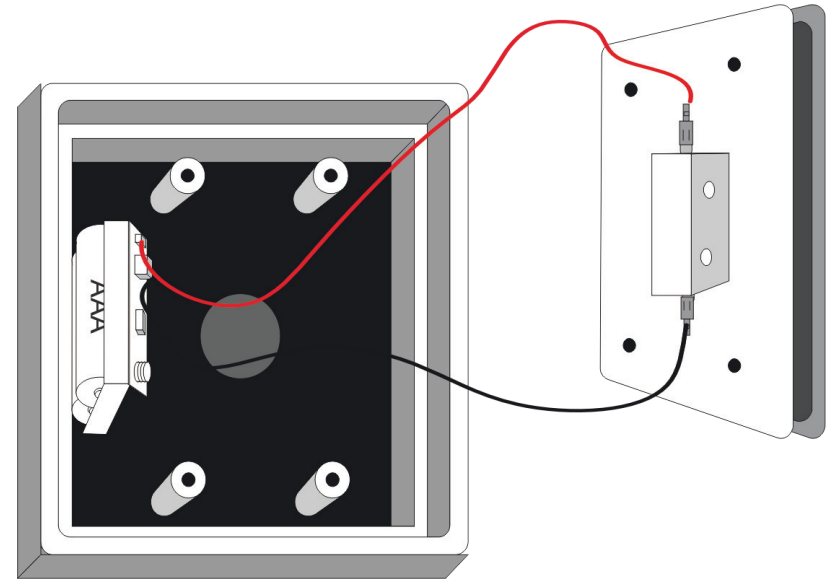
WT01 WIRELESS RF TRANSMITTER INSTALLATION EXAMPLES

TWO AAA BATTERIES

Affix the battery holder to the side of the box, as close to the bottom as possible.



OR



MZE NARROW ELECTRICAL BOX

PEEL OFF THE HOOK-AND-LOOP BACKING.

MOUNT THE TRANSMITTER AND BATTERY HOLDER ON EACH SIDE OF THE ENCLOSURE, WITH THE BATTERY HOLDER NEAR THE BOTTOM.

CUT AND STRIP THE WIRES, CONNECT TO THE SWITCH USING MARR CONNECTORS, INSTALL THE SWITCH, AND TEST OPERATION.

MZE DOUBLE GANG ELECTRICAL BOX

PEEL OFF THE HOOK-AND-LOOP BACKING FROM THE TRANSMITTER AND BATTERY HOLDER.

ATTACH THEM TO THE BACK OF THE ENCLOSURE, LEAVING CLEARANCE FOR THE SWITCH.

CONNECT THE TWO RED LEADS TO THE N.O. AND COM TERMINALS, MOUNT THE SWITCH, AND TEST OPERATION.