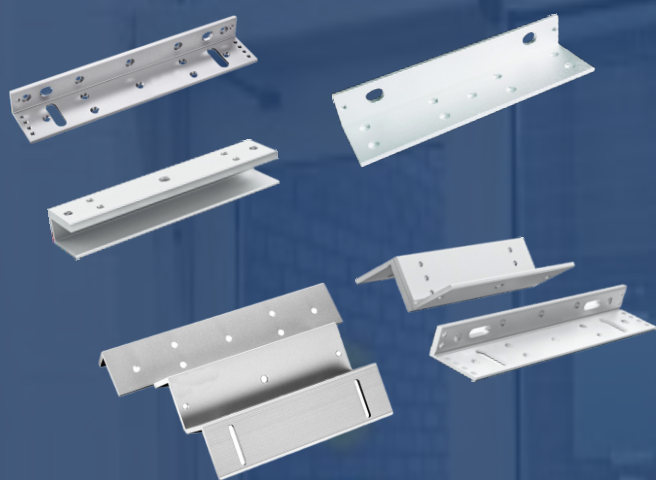


280L, 280ZL, 280U, 500L & 500ZL Mounting Brackets

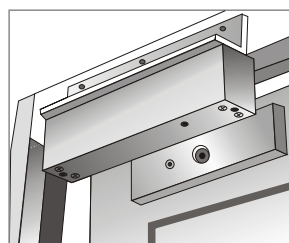


The MZE Magnetic Lock Mounting Brackets Series provides a complete range of brackets designed for secure and flexible installation of electromagnetic locks. With models suitable for both 600lbs (280KG) and 1200lbs (500KG) magnetic locks, the series ensures compatibility with various door types including outward-opening doors, inward-opening doors, and frameless glass doors.

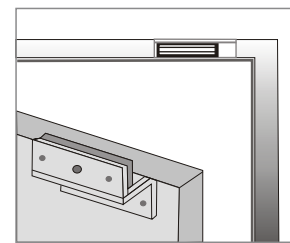
Made from high-strength aluminum alloy with a professional anodized finish, these brackets guarantee durability, stability, and a clean installation appearance.

Features

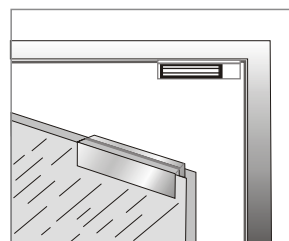
- 280L – L Bracket for 600lbs Mag Locks (ML280 / ML280D) For outward-opening doors, ensures stable lock mounting.
- 280ZL – Z&L Bracket for 600lbs Mag Locks (ML280 / ML280D) For inward-opening doors, provides both Z and L installation flexibility.
- 280U – U Bracket for Frameless Glass Door, 600lbs Mag Locks (ML280 / ML280D) Specially designed for glass doors without frames.
- 500L – L Bracket for 1200lbs Mag Locks (ML500 / ML500D) For outward-opening doors, supports higher holding force.
- 500ZL – Z&L Bracket for 1200lbs Mag Locks (ML500 / ML500D) For inward-opening doors, suitable for heavy-duty installations.



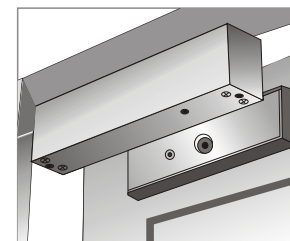
L Bracket



ZL Bracket



U Bracket



Effect of Installation groove on the Armature plate

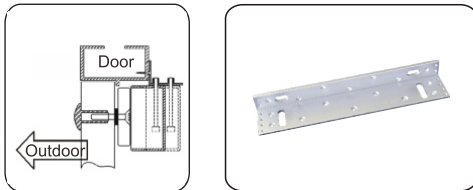
SPECIFICATIONS

Model	Compatible with
280L, 280ZL, 280U	ML280 / ML280D
500L, 500ZL	ML500 / ML500D

PRODUCT MOUNTING BRACKET

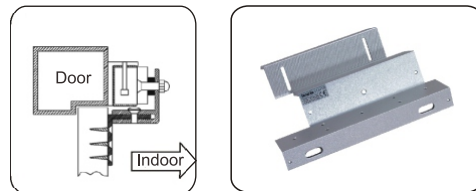
L Mounting Bracket

For doors with a width of less than 42mm, the armature plate cannot be properly installed. An additional L-shaped bracket is required.



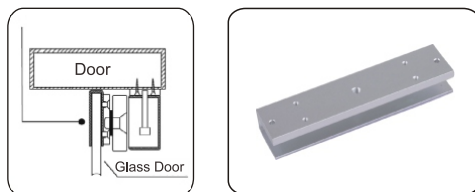
ZL Mounting Bracket

For in-swing doors, install the lock body on the inside and use the ZL bracket simultaneously.



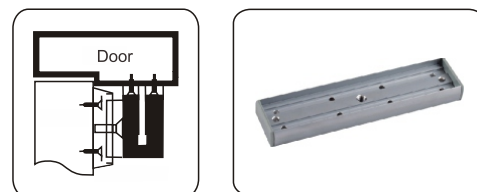
U Mounting Bracket

When installing magnetic locks on glass doors (10–15mm thick), an additional U bracket is required.



Armature Plate Bracket

For thicker doors, it is necessary to use the dedicated armature plate bracket.



For detailed specifications and functions, please refer to the User Manual. In the event of any inconsistency, the contents of the User Manual shall prevail.

***Weight and dimensions are approximate and subject to change without prior notice.**